



## **Centurion Systems Balustrade Manual**

### **Balustrade Type:**

- Bal01: Aluminium Metro Clear Glass Balustrade on concrete flooring.
- Bal01: Aluminium Metro Clear Glass Balustrade on timber flooring.
- Bal02: Aluminium Metro Glass Balustrade.
- Bal03: Aluminium Classic Picket Balustrade.
- Diamond Line Spigot Frameless Glass Pool Fence.

### **Project Details**

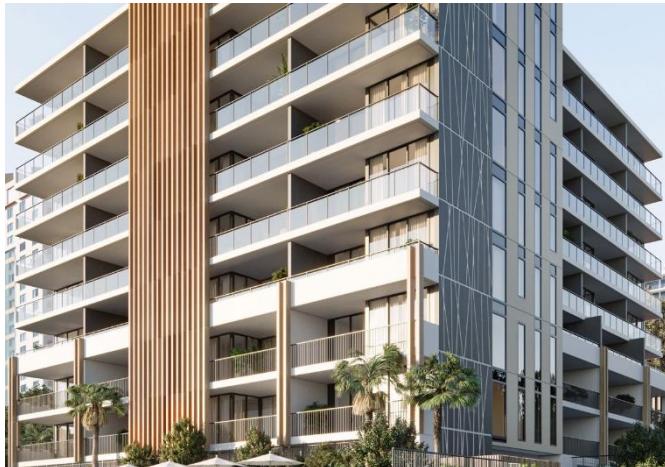
**Builder:** Morris Property Group, Queensland Pty Ltd  
**Project Name:** Essentia  
**Project Address:** 18 Remembrance Drive, Surfers Paradise QLD 4217

### **Owner Details**

**Owners Name:** \_\_\_\_\_

**Unit Number:** \_\_\_\_\_

**Contact Details** \_\_\_\_\_



### **Introduction:**

Congratulations on your Centurion System Balustrade. Lucky for you, Aluminium and glass balustrades are low maintenance, compared to many others, but they still require some general cleaning to extend their effective life and to retain their good looks.

To comply with warranty requirements very simple cleaning, maintenance and regular visual inspections should be scheduled and undertaken, which we have included within this care manual.

### **Frequency:**

The maintenance of aluminium and glass balustrades are similar but depending on whether you live in suburban or rural areas will determine the recommended cleaning timeframe:

- Suburban areas – Balustrade should be cleaned every 3 months.
- Rural areas – Balustrade should be cleaned every six months.
- Industrial and Marine Environments (1km from the sea) – Cleaning using a cold water should be carried out monthly and a warm water detergent was every six months.

You should conduct a visual inspection of your balustrade each month to help identify and fix any issues before they become too serious.

**Any structural maintenance is only to be conducted by Centurion Systems Pty Ltd or warranty will be void.**

## **CLEANING INSTRUCTIONS**

### **Glass:**

Cleaning glass balustrade panels is similar to how you would clean most household glass.

1. Wash down with clean water to loosen any residue, deposits or dirt.
2. If needed, wipe with a mild detergent and a soft cloth.

3. Continue to rinse off with clean water until there is no residue of detergent or grime.
4. Dry the glass with a soft cloth for a streak free finish.
  - Make sure the glass is cool to touch when cleaning and do not clean while in direct sunlight.
  - Do not leave any cleaning solution on the glass sealants for long periods.
  - Do not use abrasive cleaning solutions or materials.

### **Powder Coated and Anodised Aluminium:**

1. Carefully remove any loose deposits with a wet sponge.
2. Using a soft non-abrasive brush and a mild household detergent, wash the aluminium to remove dust, salt, dirt and other deposits.
3. Anodised finishes with greasy deposits or hard to remove grime can be cleaned using a soft cloth and a white spirit like turpentine or kerosene, then wipe again using a soft dry cloth.
4. Finally, rinse off with lots of clean water.

### **Do not:**

- Do not use abrasive-steel wool, scrapers, scouring liquids or powders to remove paint splashes, as this will damage, you're anodised/powder coating.
- Do not use aggressive solvents, thinners, petrol etc. on powder coating as these solvents will attack gloss levels and reduce its life expectancy.
- Do not allow any solvents to come into contact with any rubber components on your balustrade, as it will erode the rubbers.
- Do not expose your anodised/powder coatings to excessive heat, heaters or hot air guns as these will damage the coating.



Office and purpose-built showroom.

14 Aurora Avenue  
Queanbeyan NSW 2620  
ABN 71 614 455 560

**PH:** 02 6298 9160

**Email:** [sales@c-systems.com.au](mailto:sales@c-systems.com.au)

**Web:** [www.c-systems.com.au](http://www.c-systems.com.au)

**For all your external balustrade & handrail needs in steel, glass,  
aluminium, stainless steel and wrought iron.**