

KOKO

BROADBEACH

APARTMENT 2E

2 Bedroom
2 Bathroom

INTERNAL AREA 83m²

BALCONY 12m²

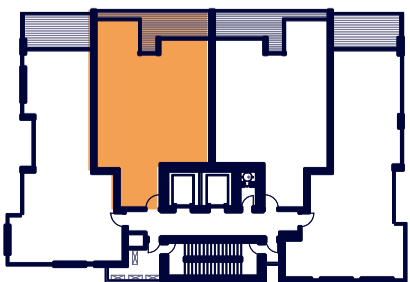
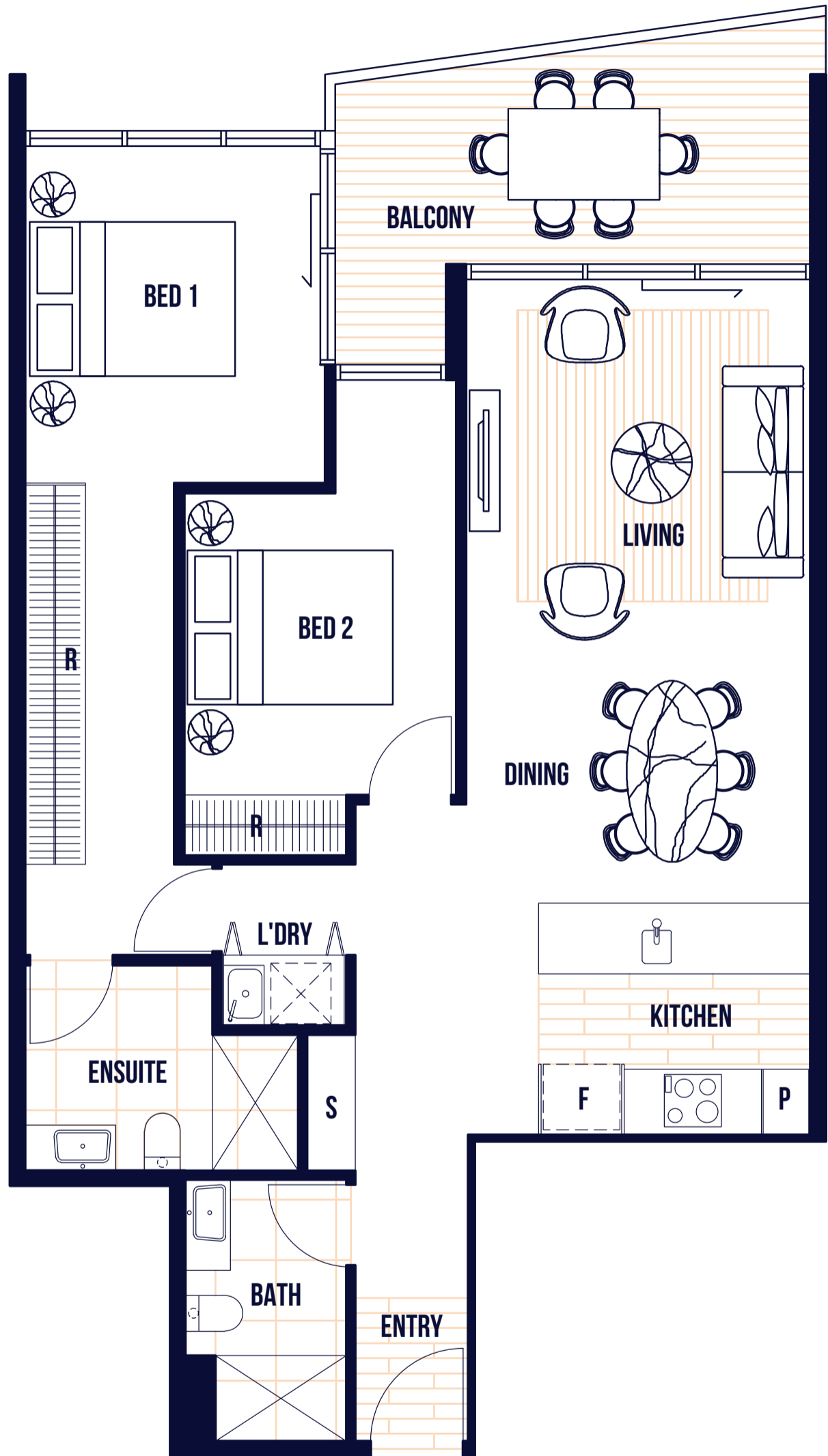
TOTAL AREA 95m²

UNIT NUMBERS:

8, 12, 16, 20, 24, 56, 60, 64, 68,
72, 76, 80, 84

MIRRORED:

29, 33, 37, 41, 45



0 1 5m

Morris Property Group do not guarantee, warrant or represent that the following information contained in this advertisement and marketing document is correct. Any interested parties should make their own inquiries as to the accuracy of the information. We exclude all inferred or implied terms, conditions and warranties arising out of this document and any liability for the loss or damage arising there from. Areas shown from centerline of internal walls/corridor walls and external face of glazing external walls. External areas taken to internal face of balcony balustrades. Void are excluded from calculations. This layout may be subject to minor amendments and dimensional changes to suit final working drawings and grid layouts.

