

LOCATION PLAN
LEVEL 2 to 3

APARTMENT TYPE : 1B

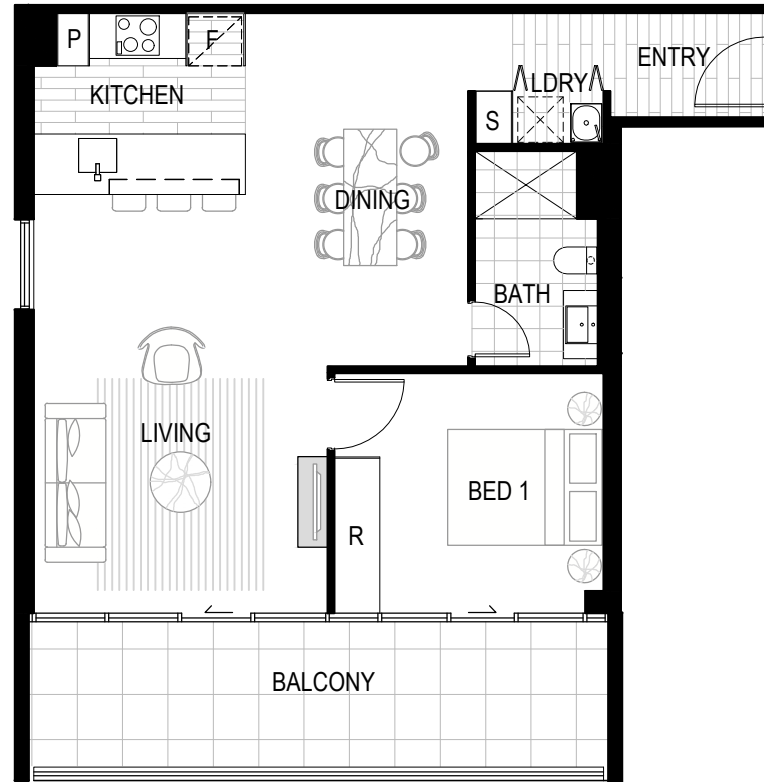
1 BEDROOM

Living area: 68m²

Balcony : 15m²

Total area : 83m²

UNIT NUMBERS: U51, U60,



SCALE: 1:100



Morris Property Group do not guarantee, warrant or represent that the following information contained in this advertisement and marketing document is correct.

Any interested parties should make their own inquiries as to the accuracy of the information. We exclude all inferred or implied terms, conditions and warranties arising out of this document and any liability for the loss or damage arising there from.

Areas taken from centreline of internal walls/corridor walls and external face of glazing/external walls. External area taken to internal face of courtyard balustrade. Void area excluded from calculations. This layout may be subject to minor amendments and dimensional changes to suit final working drawings and grid layouts.