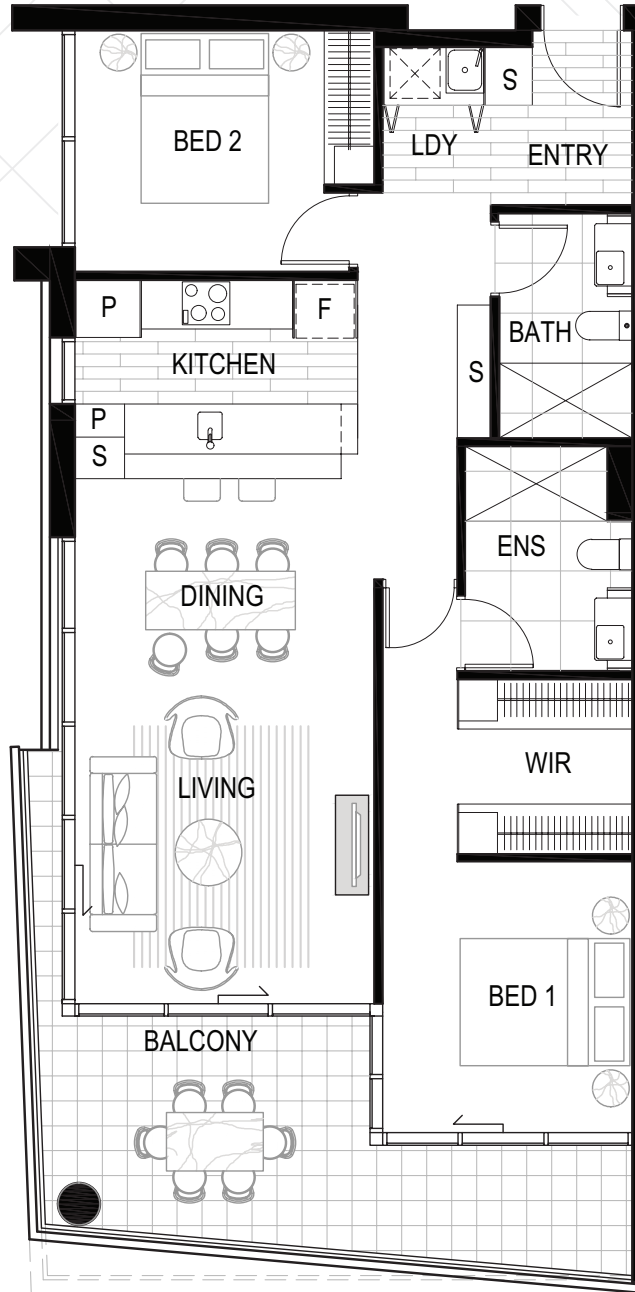




BRIDGES

APARTMENTS | BRISBANE CITY



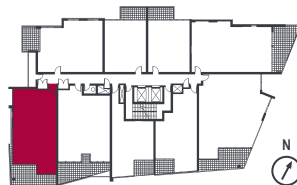
2B



INTERNAL: 87m²
BALCONY: 18m² - 22m²
TOTAL: 105m² - 109m²

AREAS VARY PER LEVEL - PLEASE REFER TO SURVEY PLANS
ATTACHED TO CONTRACT FOR SALE

105m² Units: 39, 48, 57, 66, 75, 84, 93, 102
107m² Units: 3, 12, 21, 30
109m² Units: 110, 118, 126



0 1 5M
SCALE 1:100 @A4

19 EAGLE TERRACE, BRISBANE OLD 4000 BRIDGESBRISBANE.CITY.COM.AU

Furniture not included. The developer and their appointed agents do not guarantee, warrant or represent that the information contained in this advertisement and marketing document is correct. Any interested parties should make their own enquiries as to the accuracy of the information. We exclude all inferred or implied terms, conditions and warranties arising out of this document and any liability for the loss or damage arising there from.

