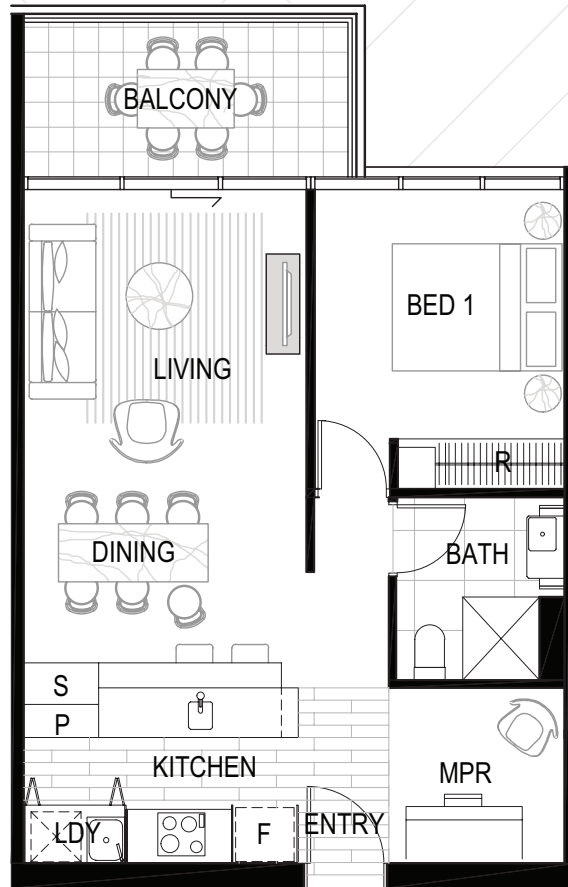




**BRIDGES**  
APARTMENTS | BRISBANE CITY



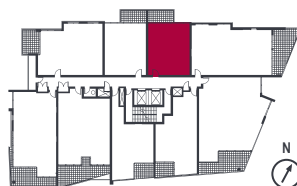
# 1C



INTERNAL: 57m<sup>2</sup>  
BALCONY: 8m<sup>2</sup>  
TOTAL: 65m<sup>2</sup>

AREAS VARY PER LEVEL - PLEASE REFER TO SURVEY PLANS  
ATTACHED TO CONTRACT FOR SALE

Units: 6, 15, 24, 33, 42, 51, 60, 69, 78, 87, 96, 105, 113, 121, 129



0 1 5M  
SCALE 1:100 @A4

19 EAGLE TERRACE, BRISBANE OLD 4000 [BRIDGESBRISBANE.CITY.COM.AU](http://BRIDGESBRISBANE.CITY.COM.AU)

Furniture not included. The developer and their appointed agents do not guarantee, warrant or represent that the information contained in this advertisement and marketing document is correct. Any interested parties should make their own enquiries as to the accuracy of the information. We exclude all inferred or implied terms, conditions and warranties arising out of this document and any liability for the loss or damage arising there from.

